



SONICS®

哥威雅

world-wide leader in *ultrasonic technology*

Sonics & Materials, Inc.

20 kHz Model 2055

Ultrasonic Plastics Welding System

new
**3500
watts**

more Power Features



Model 2055
Welding Press



GX-Series Power Supply

| | |
|---------------------|--|
| new Power | Now available in: ■ 3500 watts |
| new Features | <ul style="list-style-type: none"> • Automatic Frequency Tuning • Digital Amplitude Control • Ultrasonic Horn/Stack Frequency Display • Good Part/Bad Part Output Signal • Digital Soft Start Amplitude Ramp Control • Line Voltage Phase Angle Regulation |
| new Models | <p>Weld by: digital time - Model GXT digital time and/or constant energy - Model GXE digital time, constant energy and/or distance - Model GXL*</p> <p><i>*Available with Model 2050 press only</i></p> |

STANDARD FEATURES INCLUDE:

- Multiple Job Storage
- Digital Force Triggering
- Calibration Pulse Prior to Every Weld Cycle
- Back-Lit LCD Display
- Ultrasonics Load Meter Scale
- Upper and Lower Weld Limit Settings
- RS232 Serial Port Printer Output
- Optional PLC I/O (Input/Output) Ports
- Soft Start Overload Protection Circuitry
- Load Regulation Circuitry
- Distance Mode Settings in English or Metric Units (with Model 2050 press only)

Leaders in the field of ultrasonic plastics welding equipment and technology since 1969, Sonics & Materials offers its new line of **GX-Series** ultrasonic power supplies, combined with 20 kHz welders, for welding medium to large-sized parts at higher amplitudes.

The new GX-Series, available in 3500 watts, provides microprocessor control and consistent reliability for every application. Power supplies feature smart-logic, user-friendly keypad navigation and line voltage phase angle regulation which allows for single phase power requirement and promotes conservation of on-demand electrical energy.

Power Supply

Dimensions: 17.75" W x 11.00" H x 22.50" D
(450.8 x 279.4 x 571.5 mm)

Weight: 70 lbs. (31.8 kg)

哥威雅 (香港) 有限公司
 Qoovia Corporation
 (Hong Kong)Limited

Hong Kong Office
 15B Granville House,
 41C Granville Road, T.S.T.,
 Kowloon, Hong Kong
 Tel:+86(00852)61717217
 & 81463719
 Fax:+86(00852)81479859

Dongguan Office
 6 Hang, No 17,
 Heng Xin Road
 Heng Gang Tou,
 Xin An Qu Chang An,
 Dongguan Guangdong,
 China 523882
 Tel:+86(0769)8532-0321
 Fax:+86(0769)8532-0145



For more information: info@qoovia-hk.com www.qoovia-hk.com

Model 2055 Features

- Single Piece Rigid Cast Aluminum Machine Base and Column Hub
- Increased Steel Column Diameter and Wall Thickness



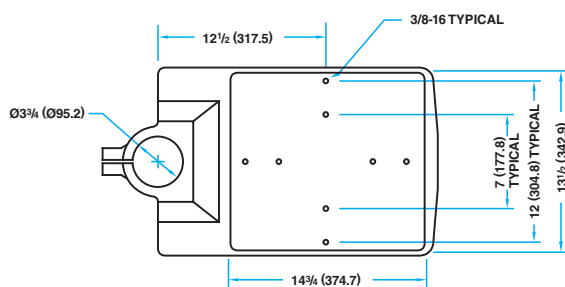
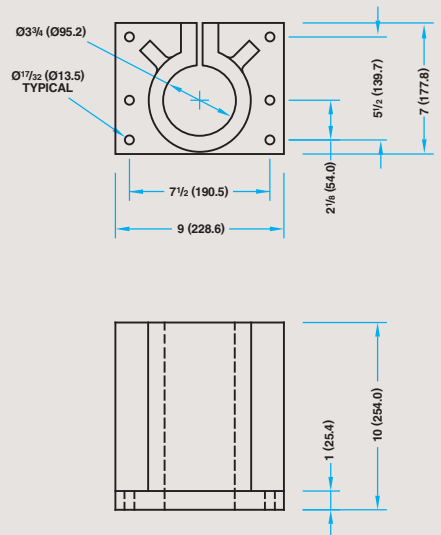
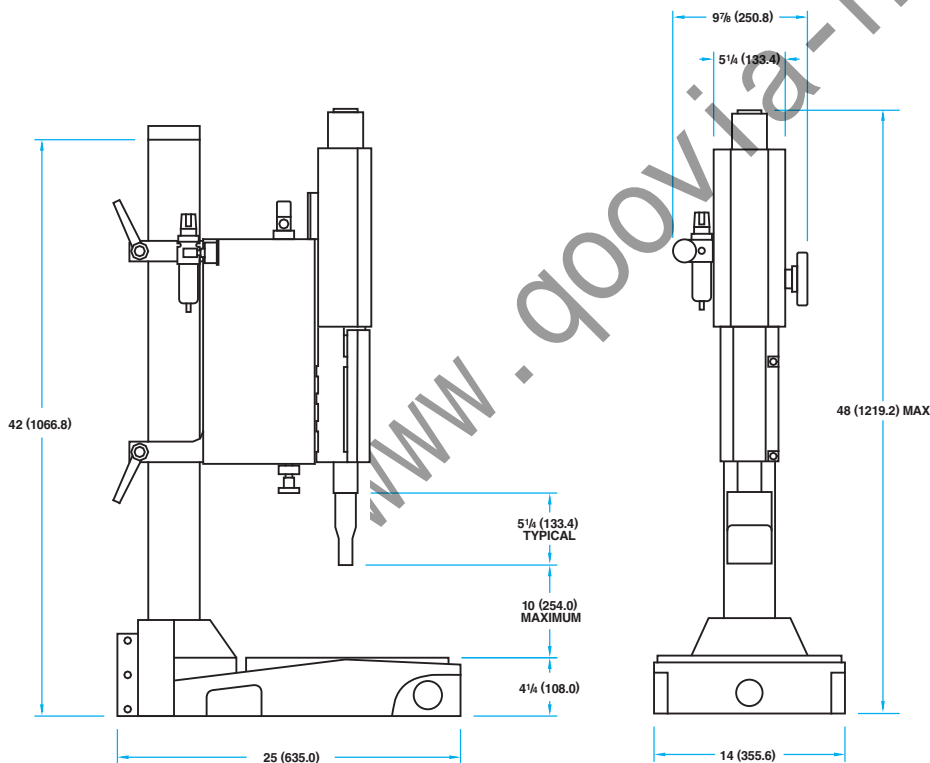
- Single Rail Linear Slide
- Direct In-Line Air Cylinder
- Extended Center Base to Column Throat Depth Distance
- Additional 12" Center-to-Center Lower Fixture Mount Holes

Specifications, Additional Features, and Options

| | |
|-------------------------------------|--------------------|
| Dual Cycle Start Buttons | Standard |
| Non-Contact Cycle Start Buttons | Optional |
| Front Emergency Stop | Standard |
| Speed & Pressure Pneumatic Controls | Standard |
| Head Adjust Counter Balance Spring | Standard |
| Adjustable Positive Stop | Standard |
| Automation Limit Switches | Optional |
| 360° Snap-In Stack Assembly | Standard |
| Rigid Mount Booster | Optional |
| Stand Alone Column Hub | Optional |
| Extended Length Column | Optional |
| 3.75" (95.3) Column Diameter | Standard |
| 4" (101.6) Stroke Air Cylinder | Standard |
| 6" (152.4) Stroke Air Cylinder | Optional |
| Air Cylinder Bore Diameter | 2.5" (63.5) |
| Clamping Force at 90 PSIG | 441 lbs. (1961n) |
| Input Voltage | 220 VAC |
| Weight | 165 lbs. / 74.8 kg |

Dimensional Data All Dimensions: Inches (mm)

Optional Stand-Alone Hub



SONICS®

© 2008 Sonics & Materials, Inc.

Specifications subject to change without notice.

Not responsible for typographical errors.

Printed in U.S.A.
1C/03/08

Registered by UL to ISO 9001



Sonics & Materials, Inc.